



U.S. Army Corps
of Engineers
Alaska District

ALASKA BASELINE EROSION ASSESSMENT

Erosion Information Paper - Igiugig, Alaska

Current as of December 17, 2007

Community Information

Igiugig (ig-ee-UH-gig), population 53, is on the south shore of the Kvichak River, which flows from Iliamna Lake on the Alaska Peninsula. It is 50 miles northeast of King Salmon and 48 miles southwest of Iliamna. The community is unincorporated and in the Lake and Peninsula Borough. The shoreline and banks are used for a variety of community activities and supply access.

Description of Erosion Problem

The beach has eroded approximately 100 feet inland in recent years where a wide access road used to be. Winds from the east ranging from 30 to 60 mph, water levels, wave action, and swift river currents cause the beach to erode and slip into the water along the front of the community and the riverbank to shear off near the bulk tank farms. Fish camps, smokehouses, sheds and outbuildings along the river have been lost. The community has no historical records of flooding, however the general area is predicted to flood by stream overflow every 40-60 years.

Potential Damages

The owner of the Kvichak Lodge placed sand and gravel along the riverbank, but it had little positive effect. These protective erosion repairs, placing of gravel, or placing of other materials in the spring are completely wiped out by the fall. Erosion is ongoing near privately owned buildings across the river from the main community development. Buildings in the erosion area have been relocated twice and will likely need to be moved again.

Photos and Diagrams

Attached are photos of erosion provided by a Corps site visit from July 2004. Attached is a diagram showing the linear extent of erosion.

References

Igiugig. 1973. *Flood Hazard Data*.

Igiugig. 1985. *Inventory of Rural Sanitation Services*.

USACE. 2007. *Alaska Community Erosion Survey, OMB approved number 07100001*, expires September 30, 2009 administered to Dan Salmon, Igiugig tribal council administrator, December 17, 2007.

Additional Information

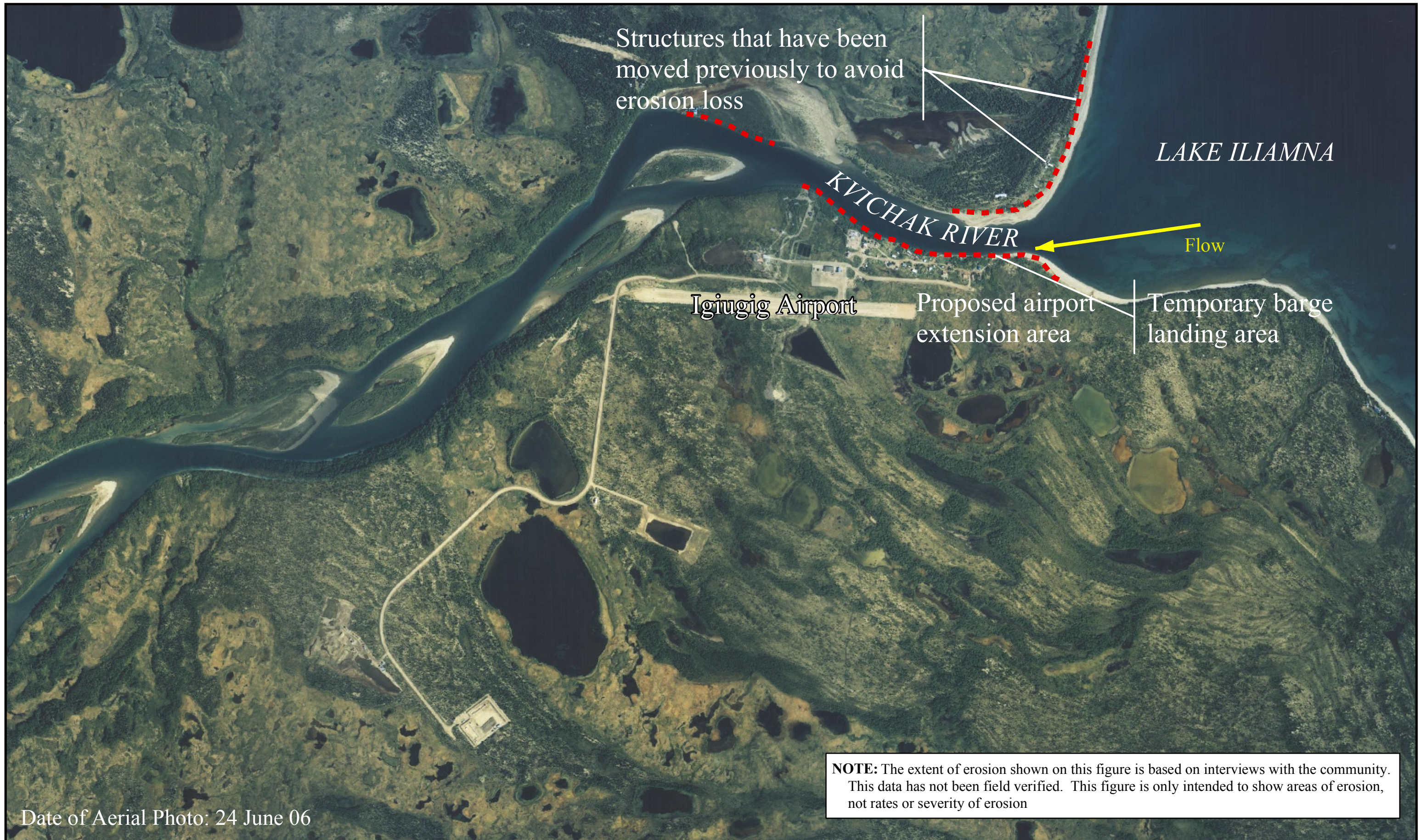
This information paper, as well as those for other communities, can be accessed on the internet at www.alaskaerosion.com. For more information please contact the Corps of Engineers, project manager at (907) 753-5694 or email Alaska.Erosion.POA@usace.army.mil



Photo 1: River Bank Erosion, July 2004.



Photo 2: Erosion by the lake, July 2004.



Date of Aerial Photo: 24 June 06



Alaska District
Corps of Engineers
Civil Works Branch

--- Linear Extent of Erosion



Alaska Baseline Erosion
Igiugig, Alaska